



# Mid-Year Report

January – June 2025

# TABLE OF CONTENTS

Letter from the Director.....	1
Our Work in Numbers .....	2
Greenville Together – Who We Are .....	3
Our Mission .....	3
Our Impact Goals.....	3
Our Plan: One-Year Strategy Overview.....	4
Backbone Support & Workgroups .....	5
Progress at a Glance .....	6
Housing Surge Workgroup.....	7
Public Education & Engagement Workshop.....	8
Training & Technical Assistance Workshop.....	9
Accountability & Sustainability Workgroup.....	10
Looking Ahead .....	11
How You Can Support .....	12

## To Our Greenville Neighbors,

Sometimes we need to take a moment to pause and reflect. While much of our energy is focused on the work ahead, and most importantly, on getting our unsheltered community into homes, this report is our chance to look back at all that we have accomplished together so far.

The first half of 2025 has been about bringing people together, building trust, and shaping a plan that's right for Greenville. We've learned from what works in other cities, tailored it to our community, and gathered the partners, city officials, service providers, and experts who will help turn this vision into reality.

Along the way, we have been learning more every day about the barriers that keep people unhoused and finding ways to overcome them. We have started building relationships with landlords and identifying housing opportunities. We launched our Community Conversation series, where we have heard your questions, shared information, and grown together. We have also strengthened how we use data to guide our work and understand homelessness by launching monthly street counts, helping us respond faster and smarter.

All of this foundational work—the partnerships, community engagement, learning, and data—has set the stage for progress. Although outside of our reporting dates, I'm thrilled to share that we have officially launched our Housing Surge and have already placed **11 households** into homes!

It's hard work, but it's the kind of work that creates real, lasting change. We're asking people to show up for something that hasn't quite been done before, and you are. Thank you for the support, the ideas, and the trust you've put in this movement. With this strong foundation laid, the rest of 2025 is about turning momentum into more homes and hope for our neighbors.

If any place can rise to this challenge, it is Greenville. Thank you for being part of this movement.



**Cody Carver**

*Director, Greenville Together*

# Greenville Together: Our First Chapter

## OUR WORK IN NUMBERS

**95**  
meetings

**142**  
hours

**1,509**  
total participants

**2,700**  
person-hours invested

These numbers represent far more than time spent, they represent a remarkable level of collaboration, speed, and collective commitment to addressing homelessness in Greenville.

### PHASE 1: DESIGN & ALIGNMENT

*August – December 2024*



40 community task force members came to the table to create Greenville Together



Representation from business, service providers, government, faith, and lived experience



Using national best practices, drafted the one-year action plan through collective input

### PHASE 2: STRATEGY BUILDING

*January 2025 – March 2025*



Expanded circle to landlords, housing providers, and developers



Tested feasibility and shaped Housing Surge strategy



Finalized backbone partnerships with distinct strengths and roles



The involvement of additional voices was critical to assess availability of units and bring forward perspectives on implementation challenges and opportunities.

### PHASE 3: FROM PLAN TO ACTION

*March – July\* 2025*



Launched 4 working groups that created a coordinated and effective response



Built systems, aligned partners, and launched the Housing Surge



Launched the Point-in-Time count to track progress and needs

\* Data includes July to capture the official launch of the Housing Surge, extending beyond the planning phase.

## Who We Are

**Greenville Together is our community's united effort to functionally end homelessness.**

We bring together local leaders, service providers, and residents to create sustainable solutions to unsheltered homelessness in Greenville. While many organizations are addressing the crisis, Greenville Together was formed to collaborate, align strategies, and drive progress through shared goals.



## Our Mission

We are working towards achieving **functional zero for unsheltered homelessness**—a reality where homelessness is rare, brief, and non-recurring. It doesn't mean homelessness will never occur, but it means our systems are strong enough to respond quickly and effectively when it does.

## Our Impact Goals

By December 2025, Greenville Together aims to:



**Rehouse at least 50 households** experiencing unsheltered homelessness within the City of Greenville.



Support at least **30 households** in safely exiting homelessness by reconnecting with family, friends, or trusted providers.

These efforts will not only help more people find housing but also build public trust in our community's collective response to homelessness.

# Our Plan: Greenville Together's One-Year Strategy

To make meaningful and lasting progress, the One-Year Action Plan includes two types of efforts:

- **Implementation Actions:** Immediate, practical steps that reduce unsheltered homelessness now and help us reach our short-term goals.
- **Planning Actions:** Forward-looking strategies that lay the groundwork for sustainable, long-term change.

## Our Four Strategic Focus Areas

### Implementation Actions



#### Housing Surge

An urgent city-wide effort to re-house 80 unsheltered households by the end of 2025.

#### Public Education & Engagement

A community-wide approach to change the narrative, build understanding, and foster empathy and support for proven solutions.

#### Training & Technical Assistance

Equipping frontline providers with tools, best practices, and equity-centered training to improve the quality and consistency of care.

#### Accountability & Sustainability

Developing systems for data collection, reporting, and learning to ensure transparency, track impact, and guide continuous improvement.

### Planning Actions



**Permanent Supportive Housing Pipeline:** Design a plan for developing and financing new permanent supportive housing units.



**Day Services & Housing Needs Assessment:** Conduct an evaluation of service gaps and housing needs to shape better support systems.



The full 2025 one-year action plan can be found at: [www.greenvilletogether.org/plan/](http://www.greenvilletogether.org/plan/)

# Backbone Support: Powering Collective Impact

A critical component of Greenville Together's success is its backbone support structure—a collaborative framework that ensures alignment, accountability, and action across the initiative. This four-pronged backbone model brings together key partners with distinct strengths and roles.



*Lead partner and  
fiscal sponsor*



*Facilitates the Lived  
Experience Council*



*Oversees the data  
infrastructure & coordination*



*Drives the Housing Surge  
strategy forward*

Over the past six months, Greenville Together's four implementation workgroups have turned strategy into action. From developing our Housing Surge strategy to strengthening public support and data systems, their collaborative efforts are central to building a more coordinated, effective response.

## Housing Surge Workgroup

Leads the design and implementation of a coordinated effort to rehouse 80 households by the end of 2025, focusing on systems alignment, outreach, and housing access.

## Public Education & Engagement Workgroup

Drives community awareness and involvement through public events, storytelling, and strategic messaging to shift perceptions and grow support for solutions to homelessness.

## Training & Technical Assistance Workgroup

Supports providers with evidence-based training aligned with the One-Year Action Plan, building capacity to deliver effective, trauma-informed services.

## Accountability & Sustainability Workgroup

Develops data-driven systems, tracks progress, and promotes transparency to ensure shared accountability and long-term impact across the homelessness response system.

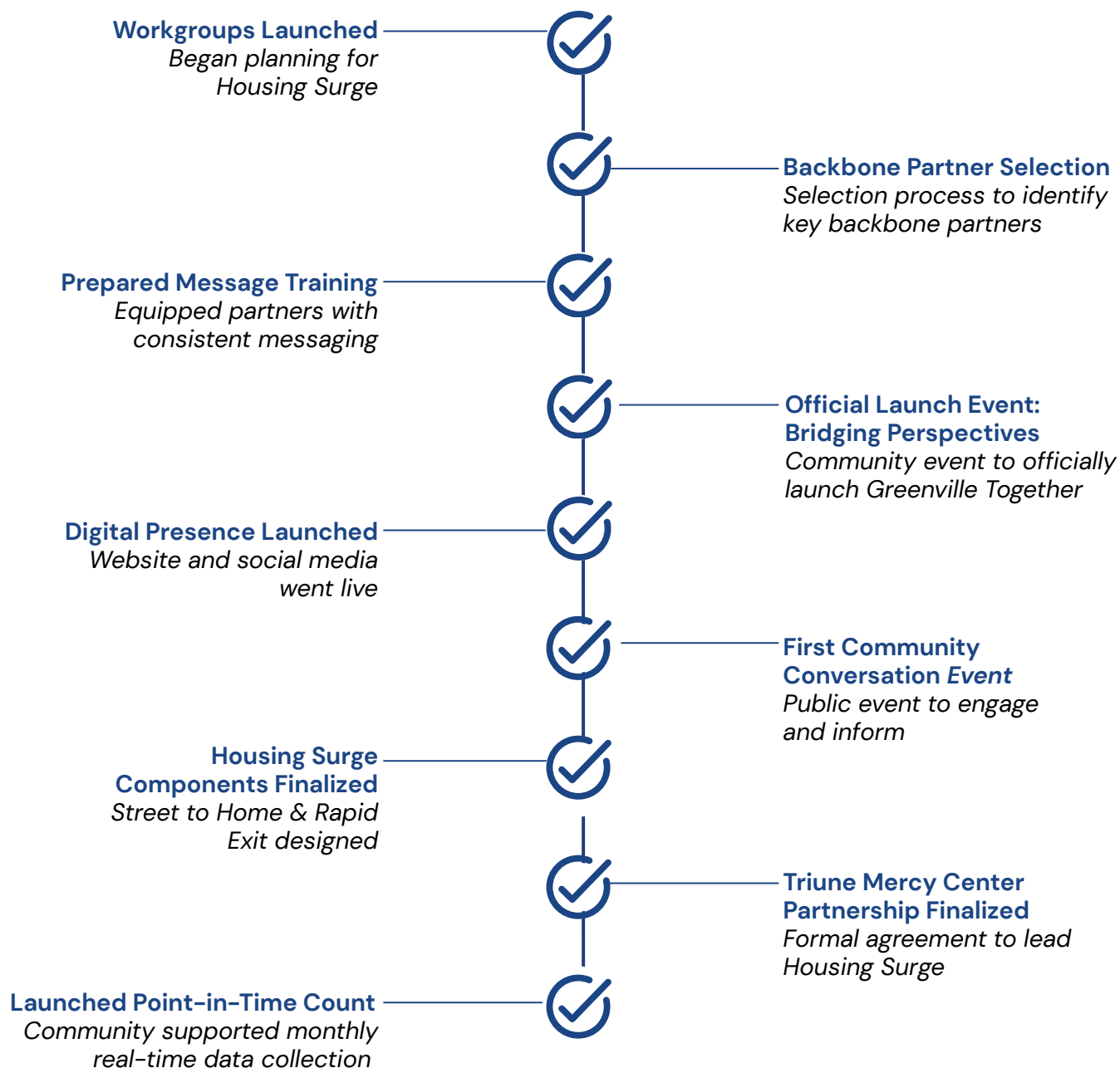


## City and Community United: Driving Homelessness Solutions Together

The City of Greenville is a key partner and this public-private partnership is essential to our success. The City's \$500,000 investment in Greenville Together reflects a shared commitment to this collaborative, systems-focused approach.

# Progress at a Glance — First 6 Months

Timeline of our January–June 2025 milestones:



## United Way and Triune Mercy Center Partnership

On June 24, 2025, United Way of Greenville County and Triune Mercy Center signed an official contract to launch the Housing Surge Initiative. This milestone formalized the partnership and marked the start of coordinated housing efforts through Greenville Together.

# Housing Surge Workgroup

From January to June, the Housing Surge Workgroup established the foundation for rehousing 80 households by the end of 2025. Meeting weekly with guidance from Barb Poppe & Associates, the team built systems to more efficiently connect people experiencing unsheltered homelessness to housing and support.

## Key Accomplishments

### DEVELOPED '*STREET TO HOME*' FRAMEWORK

Designed to rapidly house the most vulnerable individuals and surround them with intensive support.



#### Secured Housing Partnerships

Started to build strong relationships with landlords to make more units available.



#### Provided Stability Supports

Gathered furniture and essentials to help people settle into permanent housing.



#### Community Care

Connects participants to support network (shelters, food pantries, job support, etc.) to help them stay housed and stable.



#### Rapid Exit

Helps people overcome barriers—like move-in costs or transportation—so they can quickly exit homelessness.

- ✓ Selected a lead provider to manage all aspects of the Housing Surge initiative.
- ✓ Streamlined coordination between outreach teams, law enforcement, and the lead provider.
- ✓ Simplified the intake process with a faster, standardized eligibility assessment.

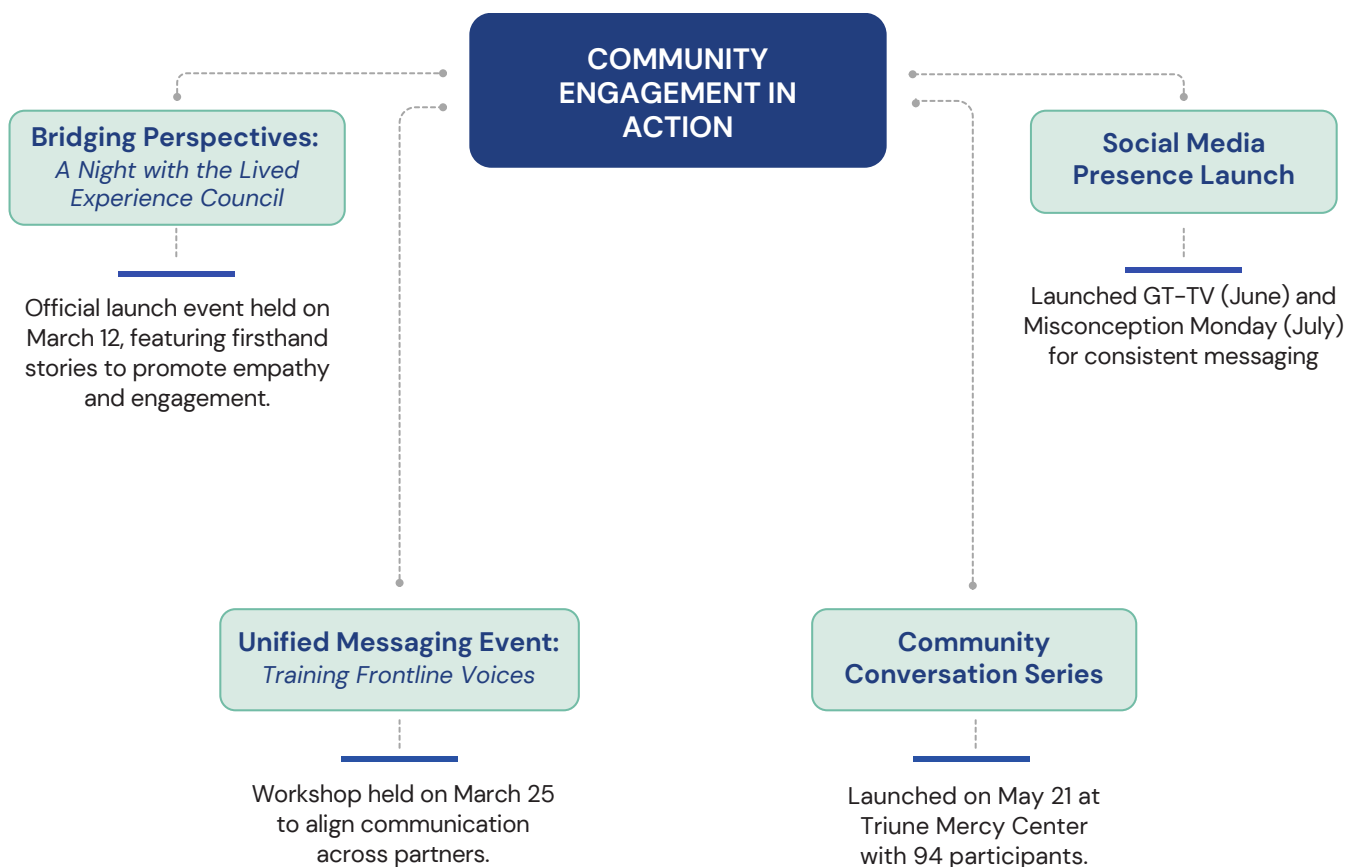
- ✓ Defined clear roles for case managers, housing navigators, and partner staff.
- ✓ Expanded flexible funding to support move-ins, utilities, and eviction prevention.
- ✓ Finalized service standards and program handbooks to guide implementation.



## Public Education & Engagement Workgroup

The Public Education and Engagement Workgroup worked on advancing the Greenville Together communications strategy. With a focus on public awareness and consistent messaging, the group helped shape how the community understands and supports our One-Year Action Plan.

### Accomplishments



# Training & Technical Assistance Workgroup

Over the first six months, the Training & Technical Assistance Workgroup focused on equipping service providers with evidence-based tools and practices aligned with Greenville Together's One-Year Action Plan. In addition to delivering targeted training sessions, the group laid the foundation for a broader learning initiative set to launch in the next phase.

## Accomplishments

### Virtual Self-Paced Training

*Virtual Training with National Alliance to End Homelessness*



50 participants  
enrolled



17 Completed,  
33 In Progress

*Participants are advancing at their own pace—helping build capacity across the community.*

### In-Person Training Intensive

*Three Days of Transformational Learning Led by David Dirks*

#### Participants



25–35 over  
3 days

#### Training Topics



Housing  
First



Trauma-Informed  
Housing Stabilization



Racial  
Equity



Diversion &  
Problem Solving



Motivational  
Interviewing

### What Participants Liked:

*Engaging  
facilitator!*

*Emphasis on  
trauma-  
informed care*

*Real-world  
tools!*

*Interactive  
cultural humility  
discussions*



## Accountability & Sustainability Workgroup

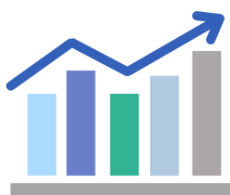
This workgroup led the development of data-driven systems to support the One-Year Action Plan. Over the past six months, it focused on leveraging metrics, transparent reporting, and shared accountability to drive continuous improvement and advance equity across the homelessness response system.

### Accomplishments



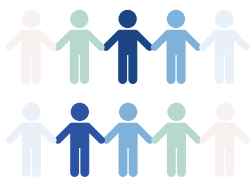
#### Developed Outcome Metrics

Designed progress metrics for the Mid-Year Report to track outcomes from the Housing Surge and Greenville Together initiatives.



#### Supported Data Backbone Selection

Participated in selecting the Data Backbone Partner and guided the creation of the job description and hiring timeline for the new Data, Evaluation, and Impact Manager.

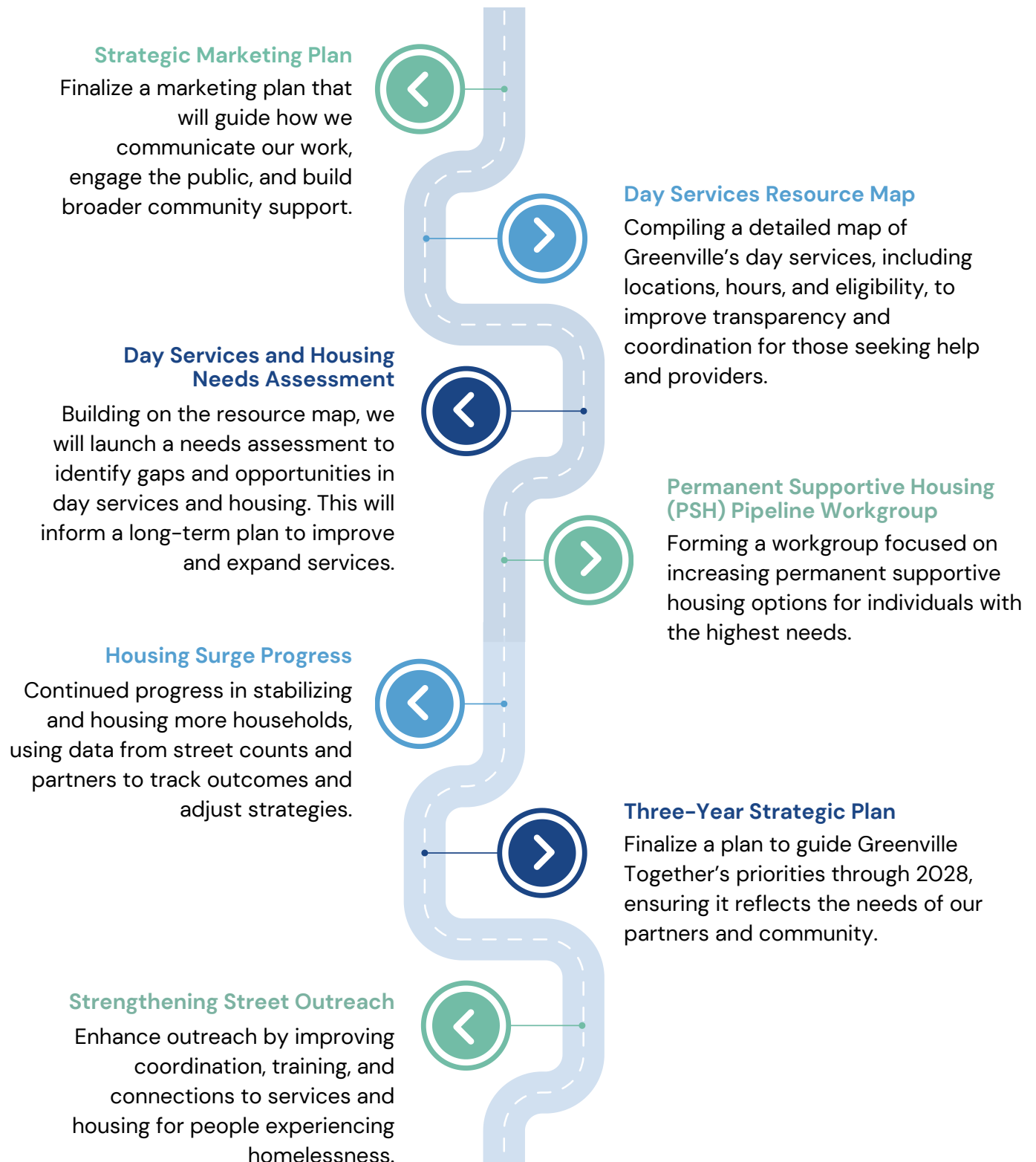


#### Advanced Transparency & Accountability

Helped establish a monthly street/shelter Point-in-Time count process—laying the foundation for more regular, accurate data reporting.

# Looking Ahead

Building on the foundation laid in the first six months, here's a look at what we're putting into action next.





Greenville Together is just getting started, and your support, curiosity, and commitment make all the difference. We look forward to growing this movement with you.

## How You Can Support

### Partner with Us

Are you a housing provider or landlord? Join us in offering hope and stability to our unhoused neighbors by providing available units for placement.

### Donate

Your financial support helps us secure housing, furnishings, and critical services for individuals transitioning out of homelessness. Every contribution makes a difference.

### Get Involved

Stay tuned for upcoming public events and volunteer opportunities. Your time, voice, and presence matter more than you know. Together, we can create a Greenville where everyone has a place to call home.



### Visit our website

[www.greenvilletegether.org](http://www.greenvilletegether.org)

**Follow us** on social media for real-time updates, stories, and ways to get involved.



### Contact us

[info@greenvilletegether.org](mailto:info@greenvilletegether.org)